



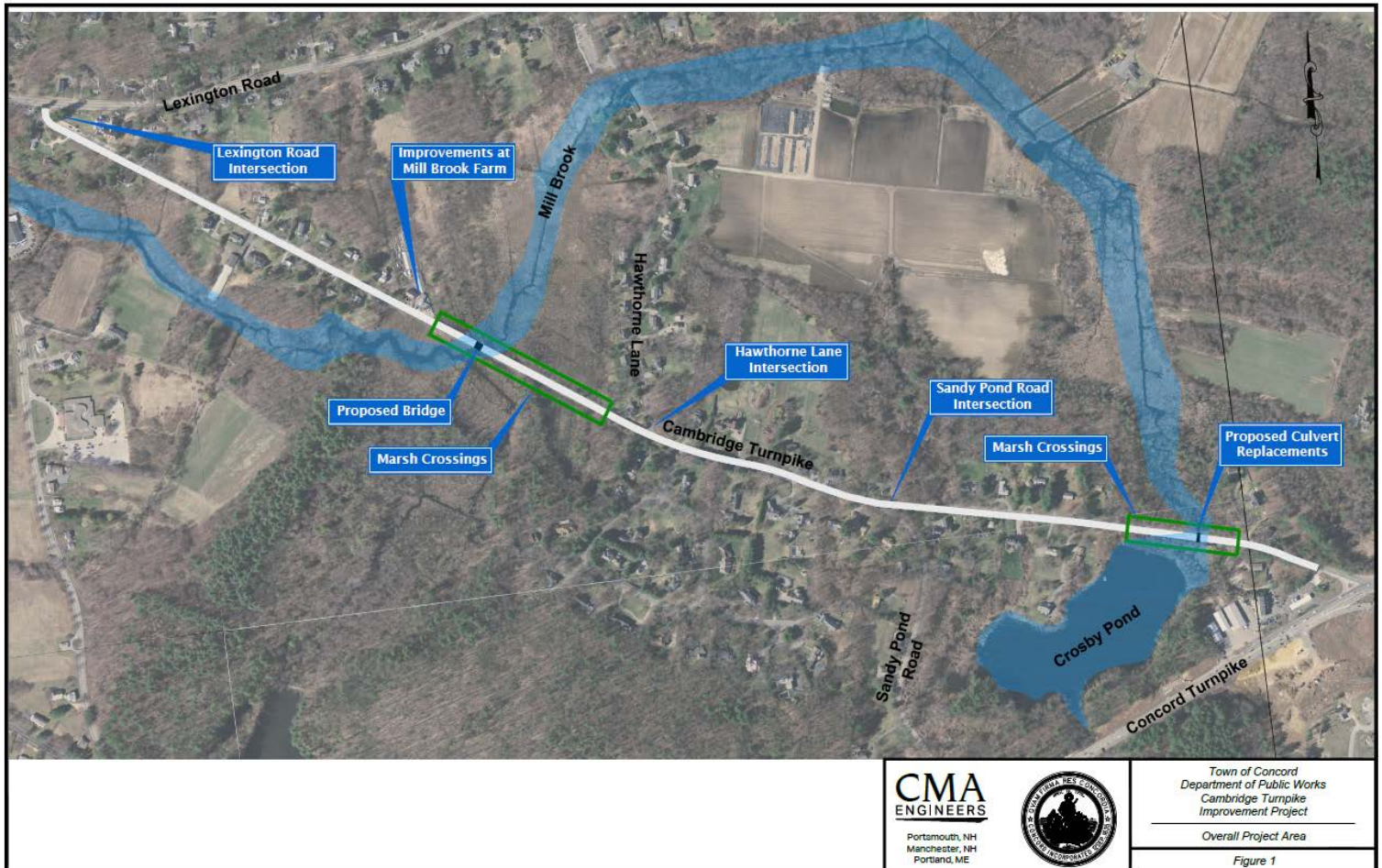
Town of Concord, MA

Concord Public Works (CPW)

Cambridge Turnpike Improvement Project (CTIP)

June 2018 Design Update

The Town of Concord, Concord Public Works (CPW), and the Public Works Commission (PWC) continue to move forward with the implementation of the Cambridge Turnpike Improvement Project (CTIP). This project will include comprehensive improvements to address roadway deterioration from Lexington Road to Routes 2 and 2A (Crosby's Corner). The overall project location plan is presented below.



 CMA ENGINEERS Portsmouth, NH Manchester, NH Portland, ME		Town of Concord Department of Public Works Cambridge Turnpike Improvement Project
		Overall Project Area Figure 1

F:\CAD\PROJECTS\2018 Cambridge Tpk Concord MA\Engineering\2018-Program Figures\Fig. Date Plotted: Nov 01, 2018 - 1:40pm

As described in previous project updates, the primary focus of this project is to resolve chronic flooding of the roadway at the eastern and western ends of the corridor, while integrating multi-modal uses of the corridor, including vehicles, pedestrians, and cyclists. The goal is to complement the community's character while being sensitive to environmental and historical resources.

As described below, this project will progress through two construction seasons beginning in the spring of 2018 and extending through 2019 and portions of 2020. It is noted that in preparation for roadway construction, National Grid will be replacing their gas distribution mains in June/July 2018.

In the last update, it was described that:

- Decisions have been reached regarding selection of materials and structural configurations for the bridges and marsh crossings. This “value engineered” option meets project objectives while balancing cost effectiveness, performance and aesthetics.
- Project review was completed by the Concord Historic Districts Commission (HDC) and project stakeholders, particularly associated with the intersection of the Cambridge Turnpike and Lexington Road, with its historic surroundings (including the Concord Museum and Emerson House) were included. The design includes a “pocket park” that enhances the historic surroundings. The HDC’s “certificate of appropriateness” was granted for the project.
- Improved pedestrian treatment was included near the intersection of Cambridge Turnpike and Hawthorne Lane, including a crosswalk that will serve the neighborhood.
- Environmental permitting for the project has been initiated, including comprehensive State and local processes; Concord Historic Commission review, and an initial archaeological assessment in support of the Mass Historical Commission process.
- Initial coordination of roadway reconstruction with affected private utilities, including gas, communications, electricity, water, and cable has begun.

Since the last update, important steps have been achieved, and the project is heading to construction in 2018. Several important milestones have been reached including:

- Key environmental permitting has been completed, including:
 - Completion of the MA Environmental Notification Form process with the Massachusetts Environmental Policy Act (MEPA) Office.
 - Completion of the Notice of Intent (under the Massachusetts Wetlands Protection Act) with the Concord Natural Resources Commission, with issuance of their “Order of Conditions” in early January 2018.)
- Completion of designs for the conventional roadway portions of the project, and near completion of the structural portions of the project.

- Final coordination with the private utilities in the corridor is nearing completion.

Construction Planned for 2018-2020

We are finalizing the construction sequencing and phasing over the 2018-2020 construction seasons. Two separate construction contracts will be executed due to the unique requirements of each phase of construction. The following highlights the scope of work and anticipated schedule and timeframes for each phase of the work.

Gas Main Replacement – Early Start-up:

- In preparation for the start of construction of the 2018 roadway project, National Grid will be replacing their gas distribution mains in Cambridge Turnpike. This replacement is planned to begin in June and should extend through July.

As shown on the attached diagram, construction is planned as follows:

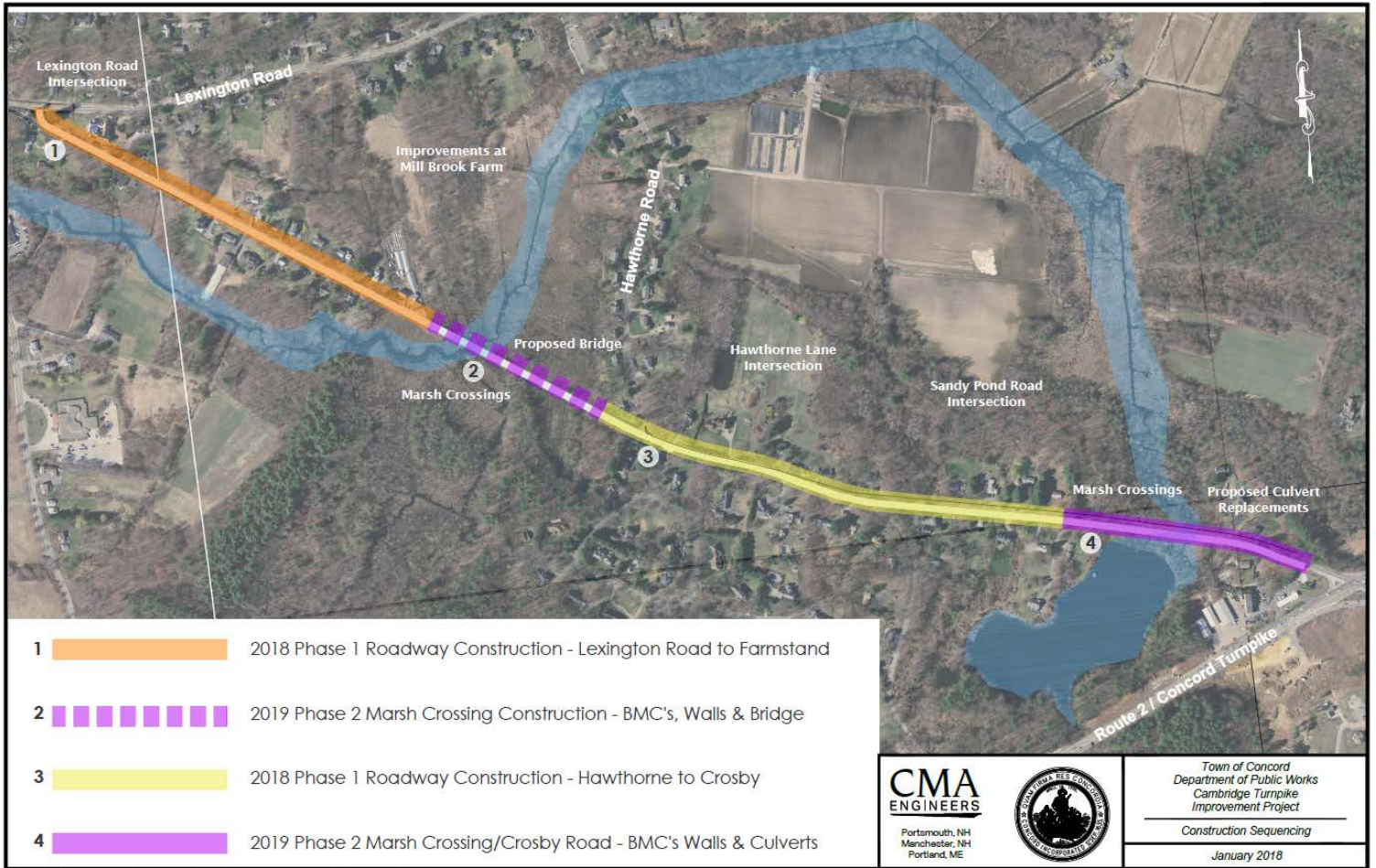
2018/19 Phase I Contract – Conventional Roadway Reconstruction:

- The Phase 1 contract will focus on conventional roadway and utilities construction between Lexington Road and the Mill Brook Farm (See Section 1 on diagram on page 4) and from Hawthorne Lane to Sandy Pond Road (See Section 3 on diagram on page 4). In addition to roadway and sidewalk reconstruction, the Phase I contract will also include replacement of Town owned drainage and water, the reconstruction of the electric utility and the reconstruction of the private communications utilities. Please note the overhead utilities will be converted to underground in Section 1 of the project.
- The Phase I bid was advertised in early May with a scheduled bid opening in early June. Construction is expected to commence in July and proceed throughout the entire 2018 construction season. Contract paving work is expected to extend into the spring of 2019. During the Phase I contract's construction an alternating lane traffic configuration will be utilized.

2019/20 Phase II Marsh Crossings, Bridge, and Culverts:

- The Phase II contract will focus on the two Marsh Crossing areas (Sections 2 and 4 on the diagram on page 4) and include the installation of deep ground improvements to support the roadway, installation of new retaining walls to minimize wetland filling and elevating the travel way out of the flood plain. The work will also replace a failing culvert system in Section 2 with a new 40' span bridge and replace two failing metal culverts in Section 4 with new concrete box culverts while reconstructing utilities within the area.
- The Phase II bid is scheduled to be advertised in August 2018 with a September 2018 bid opening. Construction is expected to commence in February 2019 and proceed throughout the entire 2019 construction season. Contract paving work will likely extend

Into the spring of 2020. The Town will utilize road closures for the Phase II contract's construction. Residents on Cambridge Turnpike will be provided with access to their homes during all phases of construction.



Communication and Coordination

Communication to affected parties and abutters will continue throughout construction. Updates will be posted on the Town's website at "Concordma.gov". Additionally updates will be provided via email. If you would like to be included in our email distribution list, or if you have any comments or questions please contact Concord Public Works at CTIPcomments@Concordma.gov or by phone at 978-318-3206.

Project Open House

CPW will conduct an early evening open house **Monday June 4th** between the hours of **5:30 PM and 7:30 PM** in the downstairs conference room at 141 Keyes Road. Town staff will be present to answer questions and discuss the project scope and timing with stakeholders.