



PUBLIC INFORMATION SESSION

NAGOG POND INTAKE REPLACEMENT

February 25, 2021

ENVIRONMENTAL
 PARTNERS

AGENDA

- Introductions
- Project Background
- Project Schedule
- Pre-Construction Activities
- Intake Construction Activities
- Environmental Protection Measures

Public Information Session
Nagog Pond Intake Replacement
Feb 25, 2021



Introductions

- Town of Acton
 - Matthew “Selby” – Land Use and Economic Development Director
 - 978-929-6440, mselectonma.gov
 - Tom Tidman – Natural Resources Director
 - 978-929-6634, ttidman@actonma.gov
 - Howard Stein Hudson, Construction Monitor
- Town of Concord
 - John Rogers, PE – Water and Sewer Superintendent
 - 978-318-3250, jrogers@concordma.gov
- Environmental Partners Group
 - Eric Kelley, PE, Project Manager
 - 617-657-0200, eak@envpartners.com
- D&C Construction, Inc.
 - Town of Concord’s General Contractor

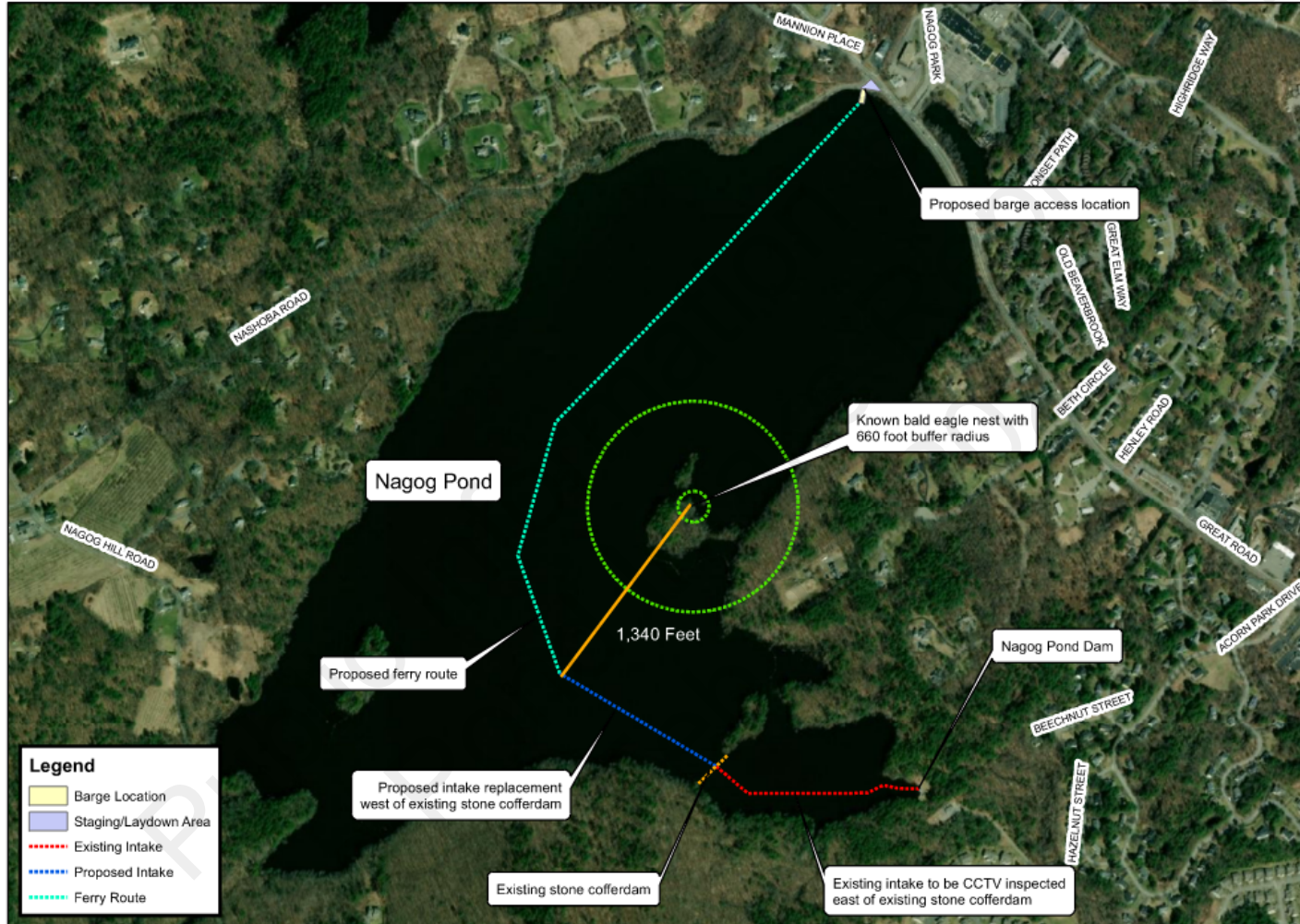


Project Information

- Project Websites:
 - <https://concordma.gov/2606/Nagog-Pond>
 - <https://www.acton-ma.gov/715/Nagog-Pond-WTP>
- The Town of Concord has created the Nagog Project updates Google Group to serve as an e-mail subscription for distribution of information regarding the project including weekly project status updates:
 - <https://groups.google.com/forum/#!forum/nagog-project-updates/join>
- Town of Acton representative for neighborhood questions or concerns:
 - Director of Land Use and Economic Development Mathew J. "Selby" at msselby@actonma.gov



Nagog Pond Intake Replacement – Locus Map

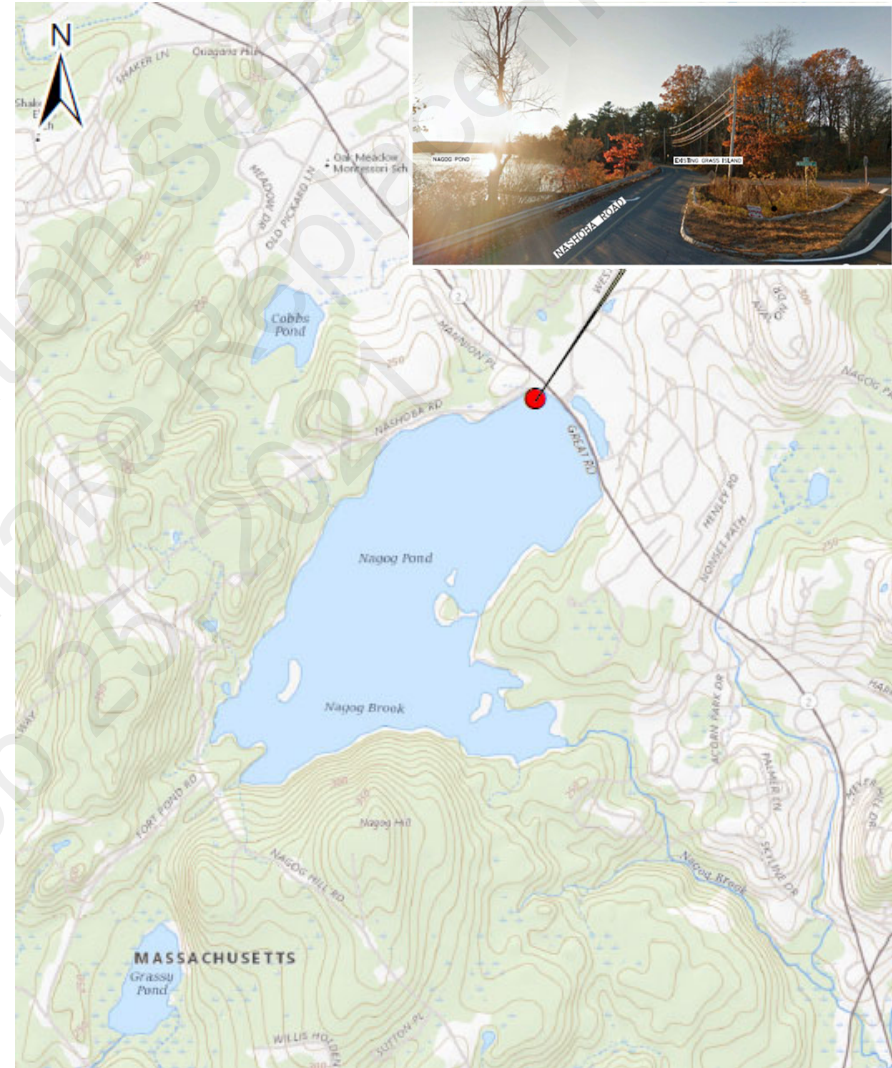


Legend

- Barge Location
- Staging/Laydown Area
- Existing Intake
- Proposed Intake
- Ferry Route

PROJECT BACKGROUND

- Concord publically bid intake replacement project in spring of 2020
- D&C Construction awarded construction contract in August 2020
- Only deep pond intake replacement scheduled at this time
- No dewatering of the Nagog Pond as part of this phase
- Pond access via Nashoba Road/Great Road (Rt.2A)



PROJECT BACKGROUND

- Potential CCTV inspection of existing intake pipeline to be reused
- Limited architectural repairs to Nagog Pond Dam Gatehouse
- Limited intake equipment work at Nagog Pond Treatment Facility



PROJECT SCHEDULE

- Pond Work:
 - 8 to 10 Week Construction Period – subject to weather/ice conditions
- March 2021:
 - Week of March 1st - Begin Gatehouse and Nagog Treatment Facility work
 - Week of March 15th – Mobilize at Nashoba Road staging area; establish site and traffic management controls
- April 2021:
 - Install pond access barges and ramp
 - Pipe and pre-cast concrete pipe anchors delivered
 - Begin pipeline construction
- May 2021:
 - Install new intake pipeline
 - Install new intake screen and support structure
 - Install intake screen air burst line
 - Complete Gatehouse and Nagog Treatment Facility work
 - Demobilization



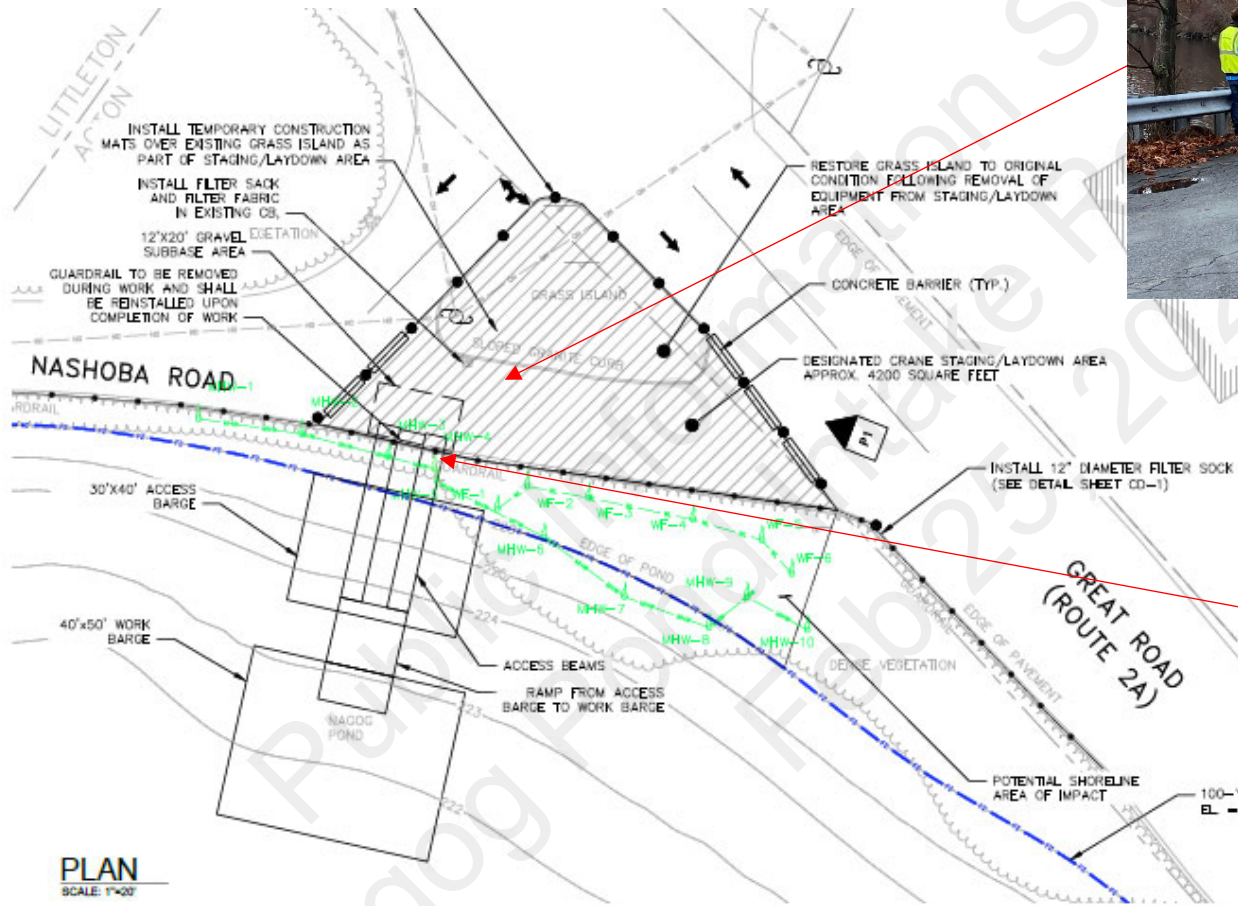
Pre-Construction Activities

- Stormwater Pollution Prevention Plan
 - Submitted to Natural Resources Department for review/comment
- Traffic management
 - Acton Right-of-Way permit issued by Acton Highway Department
 - MassDOT State Highway Access Permit under review
- Diver inspection of existing intake pipe
 - Professional Land Surveyor verification of intake elevation
 - Confirm location for connection to existing intake pipe to be reused
- Acton Building Permit issued for Gatehouse repairs
- Pre-Construction photo/video survey of construction areas/routes

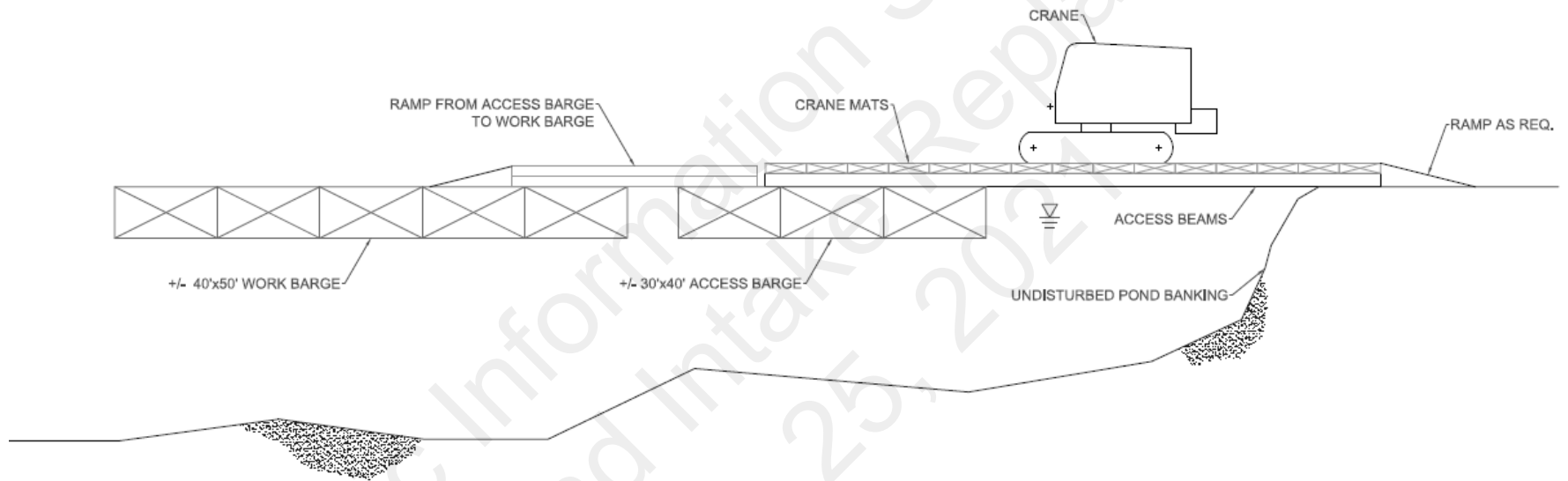


PHOTO 1: STAGING/LAYDOWN AREA
SCALE: N.T.S.

Nashoba Road Staging Area



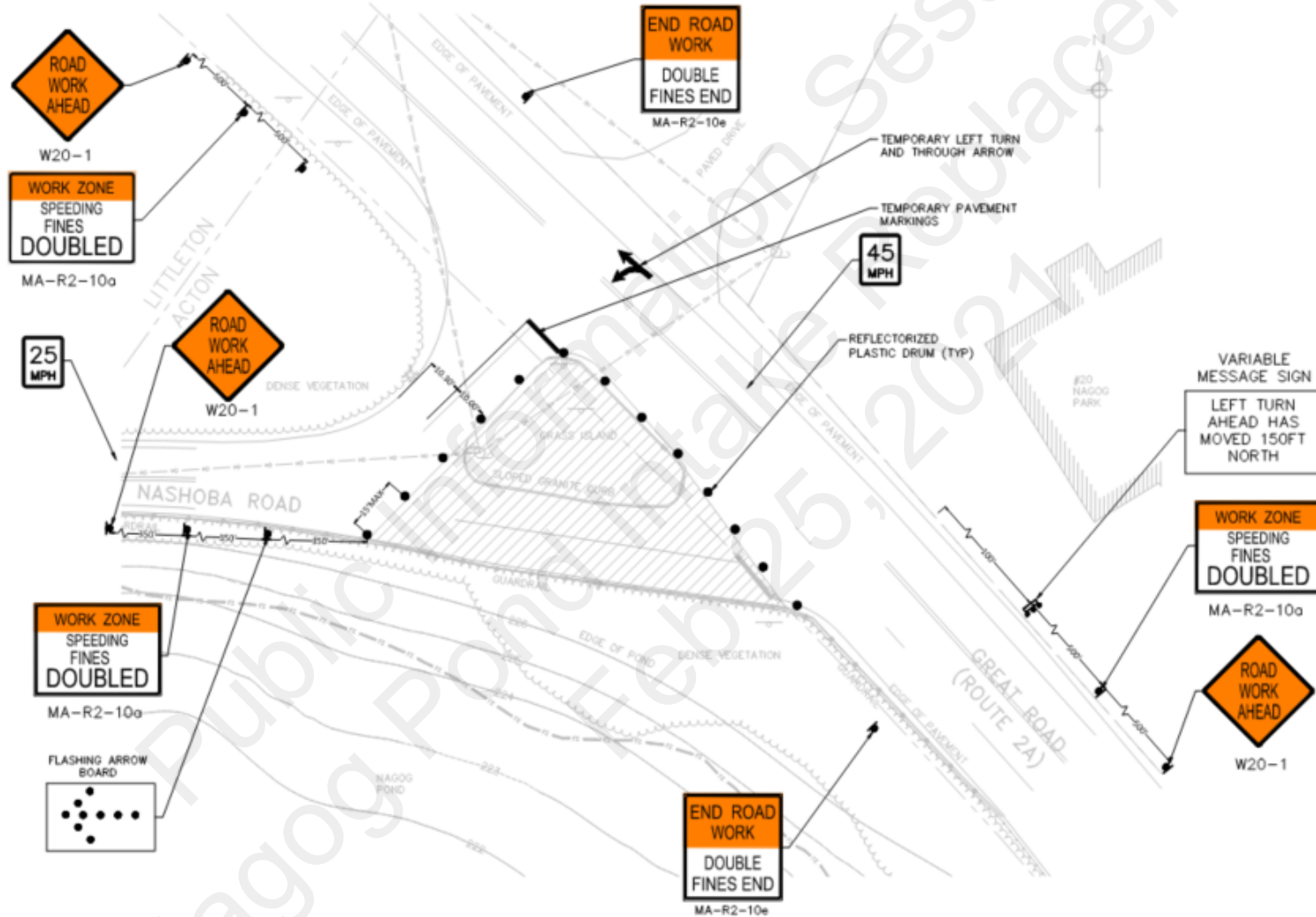
PROPOSED BARGE ACCESS PROFILE VIEW



PROFILE VIEW
SCALE: 1" = 10'

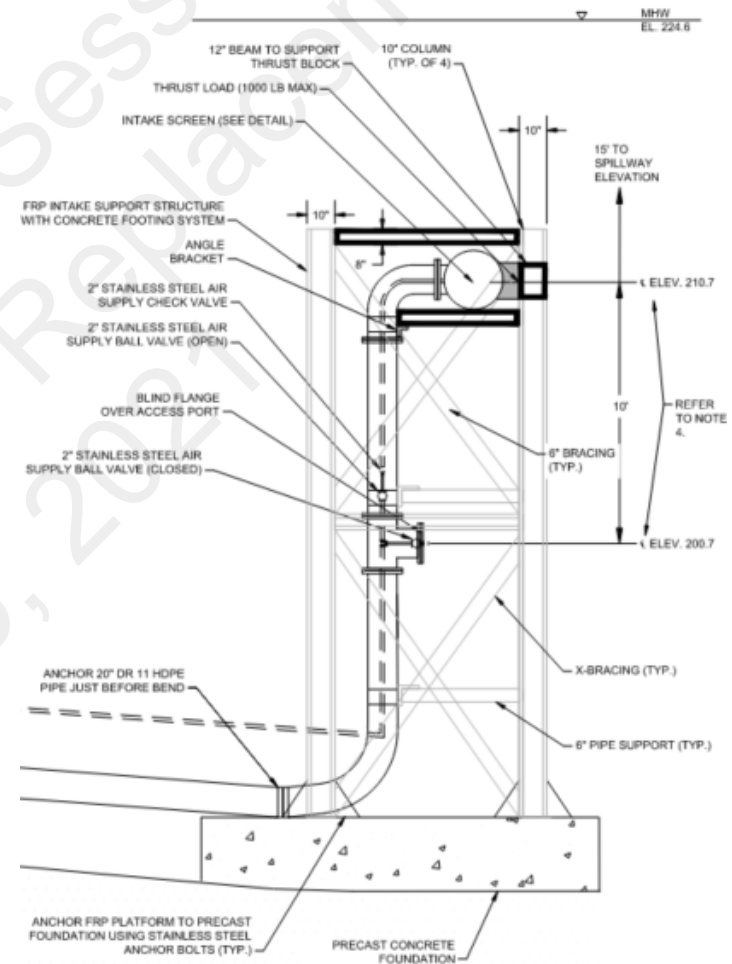


Traffic Management Plan



Intake Construction Activities

- Pipeline Construction
 - Fuse HDPE Pipe sections together on work barge
 - Attach concrete pipe anchors to pipeline
 - Float pipeline out into pond
 - Fill pipeline with water to sink it along proposed alignment
 - Connect to existing intake pipe
 - Install new intake screen and support structure in pond and connect to intake pipeline
 - Verify intake pipeline alignment and intake screen elevation



ENVIRONMENTAL PROTECTION MEASURES

- Stormwater Pollution Prevention Plan
 - Erosion/sedimentation control devices around perimeter of staging/laydown area
 - Temporary construction mats installed over existing traffic island
 - Spill prevention and containment devices installed on access barge, work barge and within the staging/laydown area
 - Disturbed areas restored to original conditions
- Coordination with Fish & Wildlife, MassDEP, and Acton staff
- Construction oversight – Concord, Acton, and D&C representatives





QUESTIONS

ENVIRONMENTAL
 PARTNERS

Public Information Session
Nagog Pond Intake Replacement
Feb 25, 2021

THANK YOU

ENVIRONMENTAL
 PARTNERS