



ARTICLE 22: CONCORD-CARLISLE REGIONAL HIGH SCHOOL FY23 CAPITAL PROJECTS



FY23 CCRSD Capital Article

- ARTICLE AUTHORIZES THE SC TO BORROW FOR REPAVING AND LIGHTING OF THE ACCESS ROAD.
- CONCORD TOWN ENGINEER; **“WE HAVE PREFORMED A FIELD REVIEW OF THE PAVEMENT CONDITION OF THE ACCESS ROAD AND ESTIMATED THAT THE PAVEMENT CONDITION INDEX (PCI) LIES IN THE RANGE OF 40-55 WHICH IS CONSIDERED “POOR” IN THE SYSTEM WE CURRENTLY USE FOR THE TOWN’S PUBLIC STREETS.”**
- ESTIMATED TOTAL COSTS:
 - \$1,053,665
 - (\$200,000) STABILIZATION ACCOUNT OFFSET
 - = \$853,665



Lighting for Access Road Costs

CONDUIT, LIGHT FOUNDATION, LIGHT POST & LAMP HEAD, &
WIRE INSTALLATION

ESTIMATED LIGHTING COSTS: **\$223,100**



Access Road Costs

CATCH BASINS & DRAINAGE, MANHOLES (4 NEED TO BE REPLACED),
CONCRETE PIPING, CURB AND CURB REMOVAL, GRANITE EDGING,
CEMENT, & ASPHALT

ESTIMATED ACCESS ROAD COSTS: **\$830,565**



Access Road 2019



Broken and spalled
pavement on sidewalks



Sunk utility covers



Multiple patches and
significant cracking

Concerns have continued regarding the safety of the road and the
sidewalks and limited ADA Accessibility



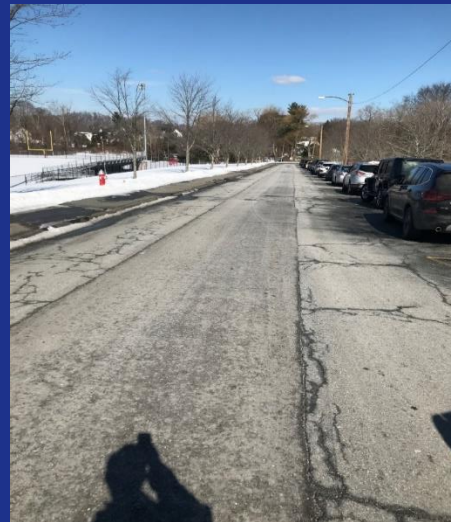
Access Road 2019



Multiple patches and significant cracking



Thoreau St. Entrance 2022





Thoreau St. Entrance 2022





Front of the Beede Center 2022





Walden St. Entrance 2022

