



#1
Short-term
 E.O.F. separate paths for
 cyclists and pedestrians

Scale: 1" = 20'



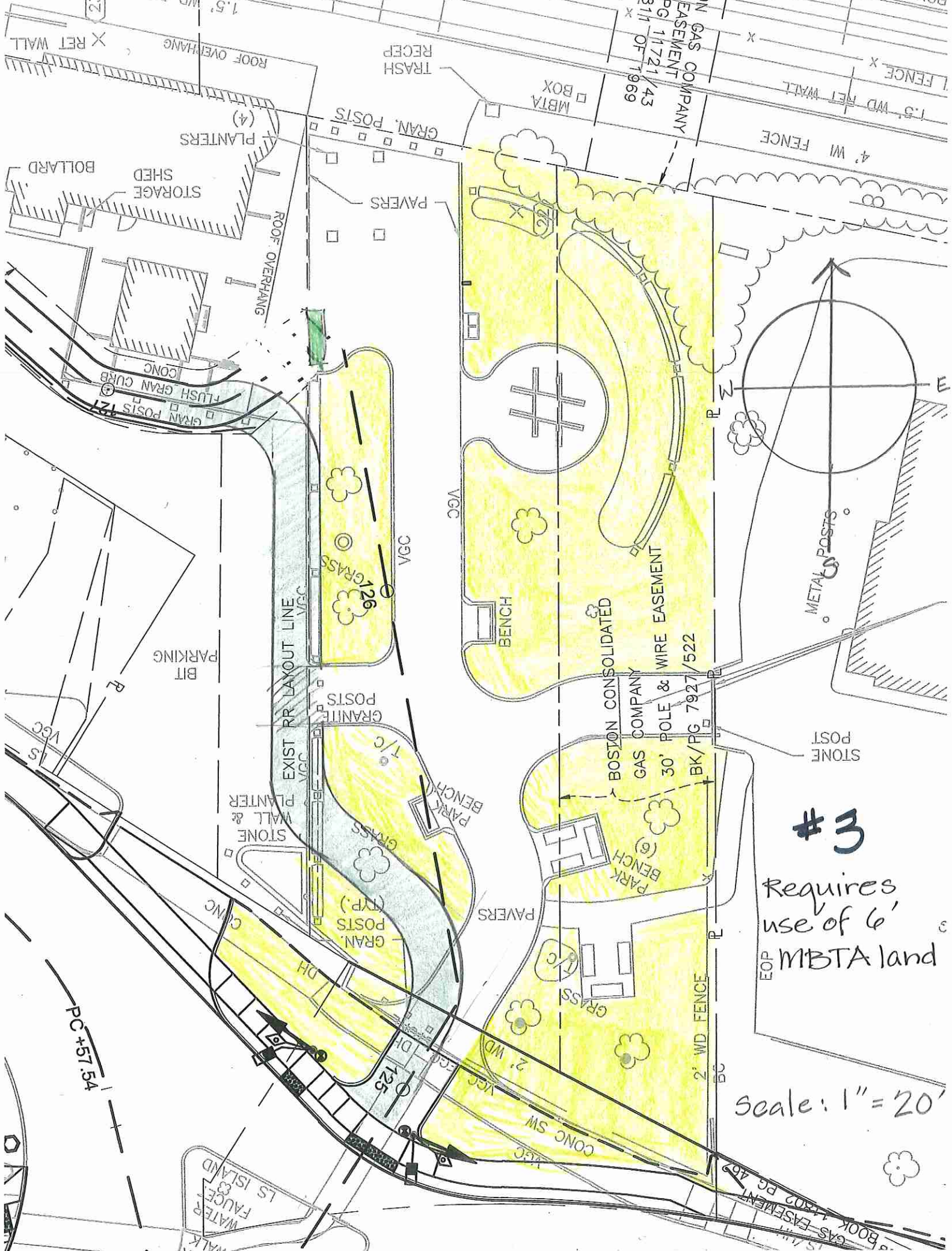


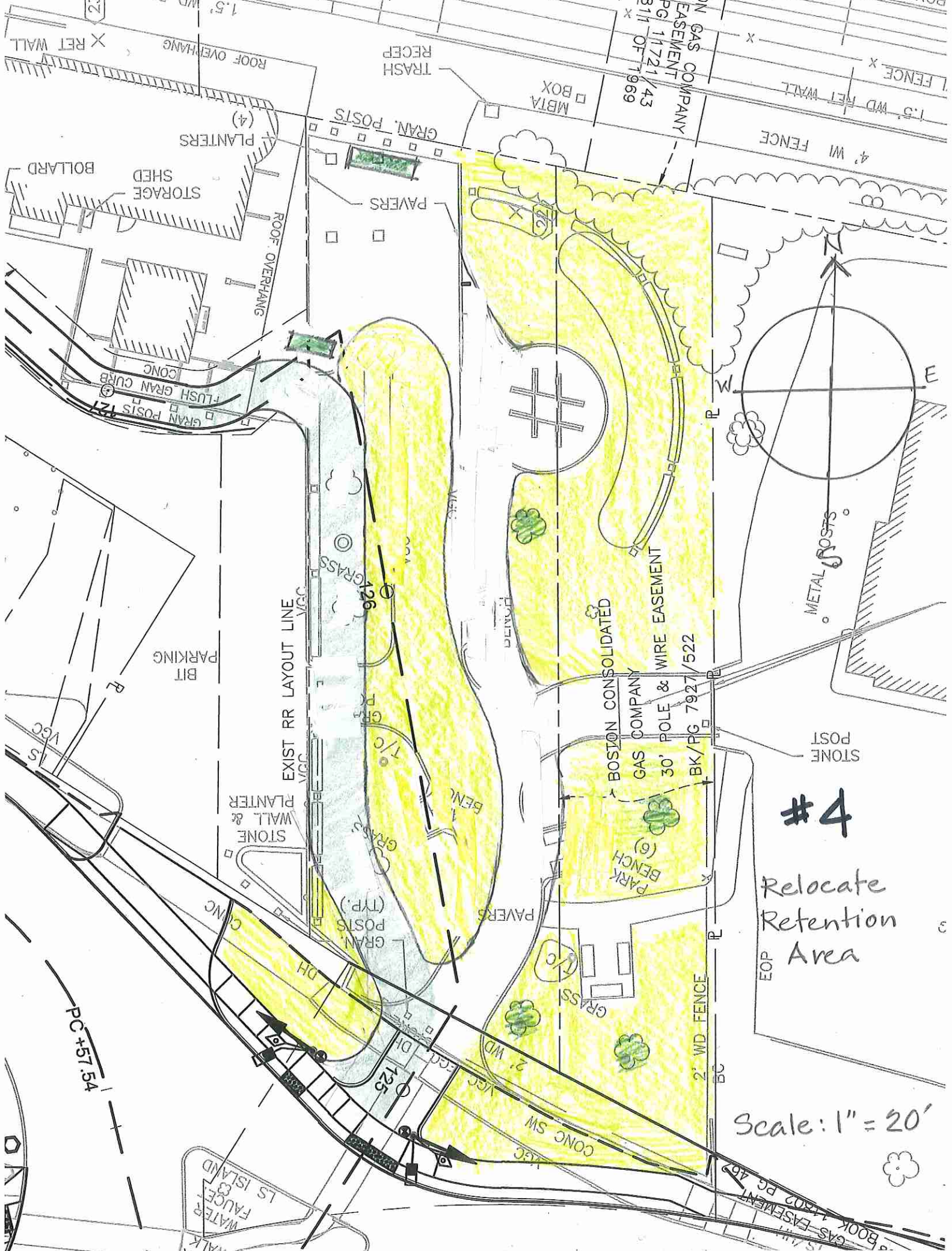
#2

Requires use of 4' MBTA land

Scale: 1" = 20'







#4

Relocate Retention Area

Scale: 1" = 20'



#6

New rail trail on eastern side of park

Scale: 1" = 20'



L#

Separate paths
for rail trail
and pedestrians

Scale: 1" = 20'

