

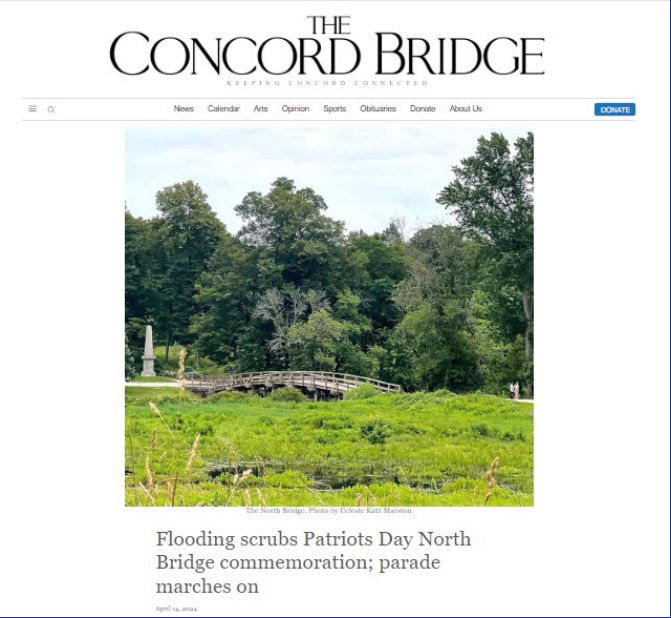
ARTICLE 16. STORMWATER UTILITY ENTERPRISE FUND

Mr. Weber moves that the Town take
Affirmative action on Article 16 by:

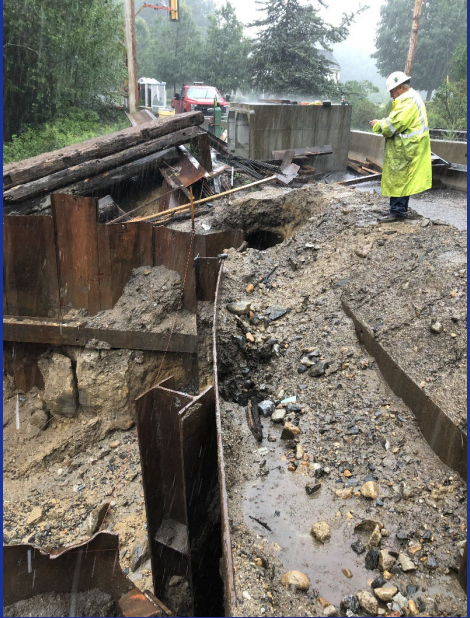
- 1) accepting the provisions of Mass. Gen. Laws. Chapter 44, § 53F½ to authorize the establishment of a Stormwater Enterprise Fund, effective July 1, 2025; and
- 2) adopting a bylaw regarding such Stormwater Enterprise Fund in the form shown on the handout.

ARTICLE 16: STORMWATER UTILITY ENTERPRISE FUND

The Issue



The screenshot shows the homepage of 'THE CONCORD BRIDGE' website. The header includes the title 'THE CONCORD BRIDGE' with the tagline 'KEEPING CONCORD CONNECTED' and a navigation menu with links for News, Calendar, Arts, Opinion, Sports, Obituaries, Donate, and About Us. A 'DONATE' button is visible on the right. The main content area features a large photograph of a wooden bridge over a green field. Below the photo is the article title 'Flooding scrubs Patriots Day North Bridge commemoration; parade marches on' and the date 'April 14, 2014'. A small credit line reads 'The North Bridge, Photo by Delores Katz Marston'.



ARTICLE 16: STORMWATER UTILITY ENTERPRISE FUND

Stormwater Budget Drivers

Old and Aging Infrastructure

- 171 Culverts, 9 Bridges over Water, 3788 Catch Basins, 1640 Manholes, 19 Miles Pipe and More

Unfunded Federal Mandates (MS4)

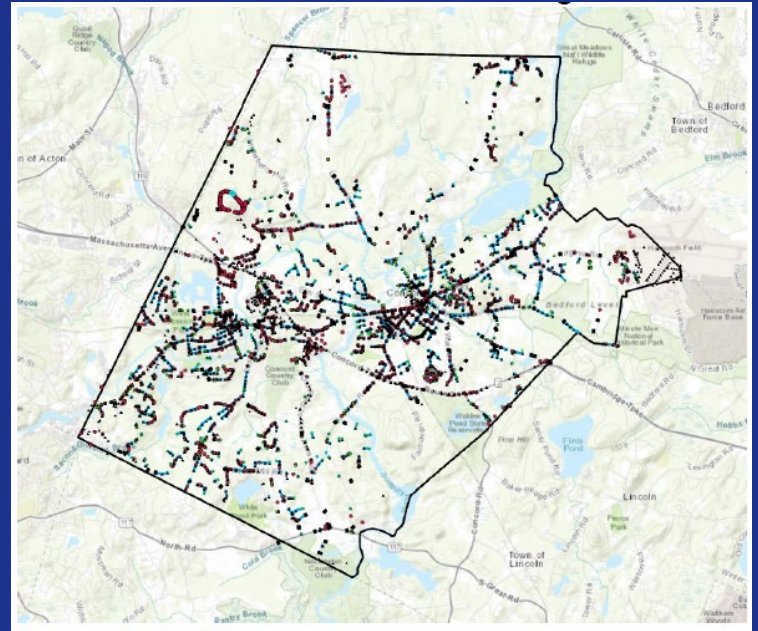
Chronic Underfunding: O&M & Capital

Compromised Environmental Protection

Emergency/Unplanned Spending

Climate Vulnerability

Insufficient Staffing & Equipment



ARTICLE 16: STORMWATER UTILITY ENTERPRISE FUND

Budget/Fees - To Be Approved at Future ATM

Preliminary Needs Assessment

- \$1.5M to \$2M per year
- Town-wide Impervious Cover 53 million sq ft
 - Does not include roads
 - 52% Residential
 - 48% Non-Residential

Fee Structure – To Be Established by PWC (after public hearing)

- Enterprise Fund – Fee to be assessed to ALL properties
 - \$100-\$200/Year – Base Residential Annual (Estimate)
- Incentives for reductions in impervious cover

ARTICLE 16: STORMWATER UTILITY ENTERPRISE FUND BYLAW

Section 1- Purpose: to fund;

- a. MS4 Permit Compliance
 - Unfunded federal mandate
- b. Flood Mitigation
 - Climate resiliency
- c. Failing Infrastructure
 - Drains, Culverts, Bridges
- d. Deferred Maintenance
- e. Stormwater Quality



ARTICLE 16: STORMWATER UTILITY ENTERPRISE FUND BYLAW: FRAMEWORK

- Sec 2: Definitions
- Sec 3: Responsibilities
- Sec 4: Establish Enterprise Fund
- Sec 5: Rate Setting
- Sec 6: Billing, Collection, Credits
- Sec 7: Appeals



Commercial



Residential


ARTICLE 16: STORMWATER UTILITY ENTERPRISE FUND

THANK YOU

STORMWATER ENTERPRISE FUND - PRELIMINARY EVALUATION

Town of Concord, Massachusetts | January 2024

The Town of Concord is developing a strategy to fund the Town's stormwater management programs, which include complying with federal permitting requirements focused on water quality, stormwater flooding; ensuring resiliency planning for future flood mitigation; and in water infrastructure, while at the same time adopting a methodology for assigning fees equitably to all users. After reviewing available funding mechanisms and examining



<https://concordma.gov/3404/Stormwater-Utility>

CONCORD STORMWATER ENTERPRISE FUND
KEY TERMS AND FREQUENTLY ASKED QUESTIONS

Concord Public Works is exploring the feasibility of implementing a Stormwater Enterprise Fund. Below are some key terms and frequently asked questions to ensure our community is informed about stormwater financing in Concord.


KEY TERMS

Impervious Surface: Materials or compact surfaces that do not allow stormwater to infiltrate or seep into the ground.

Impervious Surfaces

Man-made surfaces (pavement, concrete, roads, rooftops) that are water resistant.

Water runs off from rooftops and roads into the river via storm drains or causes flooding.

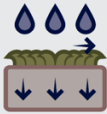


vs.

Pervious Surfaces

Man-made and natural surfaces (grass, leaves, mulch) that are porous.

Water is absorbed into grass and soils, and less water runs off into the river.



Stormwater: Runoff from precipitation or other sources that drains into the Town's drainage systems (such as catch basins, pipes, and culverts) and ultimately ends up in groundwater, ponds, streams and/or wetland resource areas. Areas with large amounts of impervious surface lead to greater amounts of stormwater runoff conveyed into the drainage system rather than seeping into the ground.

Stormwater Pollution: Pollutants (such as oils, fertilizer, sand, and trash) in stormwater runoff, which can contaminate drinking water supplies, fish and wildlife habitat.


Stormwater Flooding: Flooding of streets and sidewalks from overwhelmed stormwater drainage systems. Note: the total average annual precipitation has increased by approximately 10 percent in the last fifty years across the Northeast. In addition, if amounts of total impervious surface in towns and cities have led to higher amounts of stormwater runoff. In areas where water infrastructure has not been updated to accommodate greater runoff, minor but disruptive flooding events occur more frequently.

Total average annual precipitation has increased by approximately

10%

in the last fifty years across the Northeast

<https://concordma.gov/3404/Stormwater-Utility>



ARTICLE 16. STORMWATER UTILITY ENTERPRISE FUND

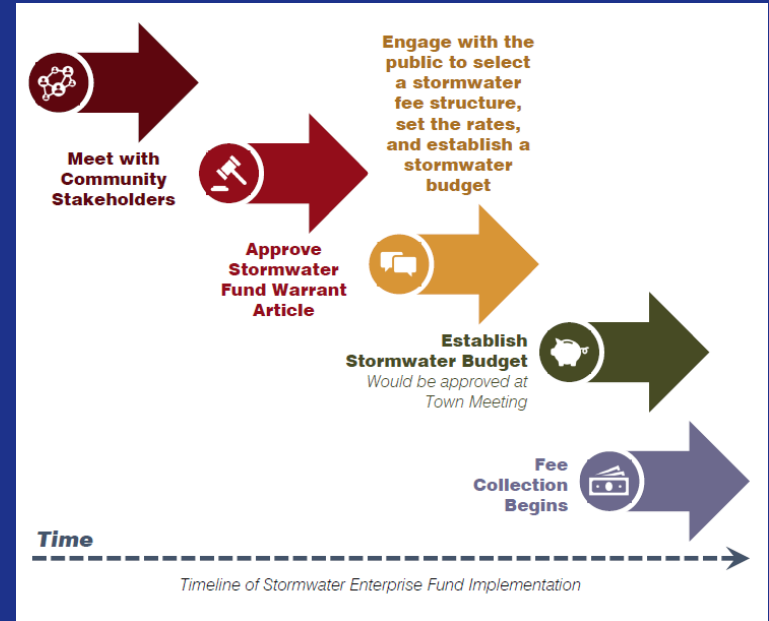
Mr. Weber moves that the Town take
Affirmative action on Article 16 by:

- 1) accept the provisions of Mass. Gen. Laws. Chapter 44, § 53F½ to authorize the establishment of a Stormwater Enterprise Fund, effective July 1, 2025; and
- 2) adopt a bylaw regarding such Stormwater Enterprise Fund in the form shown on the handout.

ARTICLE 16: STORMWATER UTILITY ENTERPRISE FUND Implementation Schedule

Project Phasing

- 2024 Annual Town Meeting (FY25)
 - Enabling Legislation
 - Establishment of Bylaw (Framework)
- Public Works Commission
 - Establish FY26 Rates (Hearing)
- 2025 Annual Town Meeting (FY26)
 - Budget Approval



Massachusetts Stormwater Enterprise Funds

- Ashland
- Ayer
- Bellingham
- Braintree
- Canton
- Chicopee
- Chelmsford
- Dedham
- Dracut
- East Longmeadow
- Fall River
- Franklin
- Gloucester
- Longmeadow
- Millis
- Milton
- Newton
- Northampton
- Pepperell
- Reading
- Rutland
- Shrewsbury
- Tewksbury
- Wellesley
- Westfield
- Westford

*Many more are exploring the feasibility of adopting a stormwater enterprise fund.

Federal Stormwater Regulations

2003 – 2008

\$ Education and Housekeeping

2016 – 2022

\$\$ Inventory and Water Quality Monitoring

2024+

\$\$ Maintenance and Repair

\$\$\$ Replace/Improve

Increased Complexity = More Funding

MS4

Municipal
Separate
Storm
Sewer
System



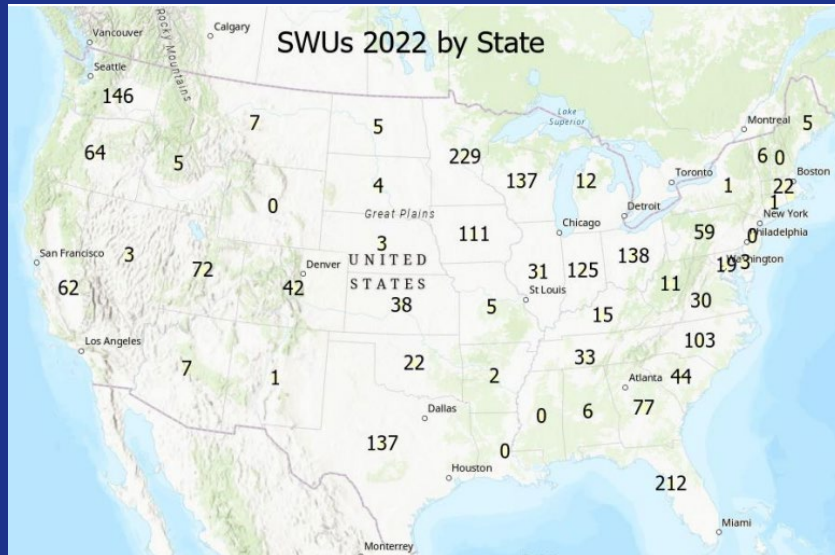
Stormwater Enterprise (SWE) Fund

- Simple Set Fee Structure
 - Annual or Quarterly Fee (Residential v. Commercial/Industrial)
- Impervious Area Based Method
 - a. Calculated on Impervious Area
 - b. Establish a Common Unit: An Equivalent Residential Unit (ERU) is the amount of impervious area on a single-family residential parcel.
 - Flat Rate
 - Tiered
- Rates Based on Actual Costs for Stormwater Management

How would a Stormwater Fee work?

- A stormwater fee is a payment for stormwater management, operation, and maintenance provided by the Town.
- Stormwater fees are collected from property owners based on a property's impact on the storm drain system in addition to assumed usage of roadways and sidewalks.
- Stormwater enterprise funds receive all revenue from a stormwater fee and are only used for the purposes of stormwater management.

Stormwater Enterprise Funds Nationwide & Regional



Source: Western Kentucky Stormwater Utility Survey 2022