

**CLIMATE ACTION COMMITTEE MEETING**

**Wednesday, February 11, 2026, 7:00 PM**

**Select Board Meeting Room, Town House, 22 Monument Square, 2nd Floor**

This meeting may also be accessed remotely through the following Zoom link:

<https://us02web.zoom.us/j/89658925084?pwd=dqCN47QKgw07ZKlda071EnKYbbbIfk.1>

Meeting ID: 896 5892 5084

Passcode: 771884

Dial In Toll-Free: 888 475 4499

**Agenda**

- |   |        |
|---|--------|
| 1. Welcome – comments, announcements, events          | [7:00] |
| 2. CMLP Presentation on Time of Day Rate rollout      | [7:05] |
| 3. <a href="#">Climate Action and Resilience Plan</a> | [7:30] |
| 4. Approval of minutes: Jan. 21                       | [8:30] |
| 5. Public comments                                    | [8:35] |
| 6. Adjourn  | [8:40] |

Documents relevant to this meeting will be posted when they become available at

<https://concordma.gov/4043/Meeting-Materials>



If you are deaf or hard of hearing, or if you are a person with a disability who requires accommodation, please contact Megan Zammuto, Deputy Town Manager for the Town of Concord at [mzammuto@concordma.gov](mailto:mzammuto@concordma.gov) or 978-318-3006. While every attempt will be made to provide reasonable accommodations, requests should be made with as much advance notice as possible.

## Events/Meeting List

Thu., Feb 11 9-10:30 AM, 141 Keyes Road, 1st floor meeting room - retrospective and panel discussion program entitled Historic Landscape Preservation in Concord ~ A 25-Year Retrospective of Heywood Meadow. For more detail and Zoom info, visit <https://concordma.gov/AgendaCenter/ViewFile/Agenda/02122026-13640>

Weds., Feb 18 7-8 PM; EnergizeActon webinar entitled Solar without Federal Incentives: why it still works and what options exist. What homeowners should know to go solar with confidence. To register, visit [www.tinyurl.com/home-solar-webinar](http://www.tinyurl.com/home-solar-webinar)

Thu., Feb 19 9-10 AM; MCAN webinar entitled Insights from the 100-Home Embodied Carbon Study. This is the first time we've seen an analysis of the actual carbon impact, both embodied and operational, from a range of recent residential new construction. To register, visit [https://www.massclimateaction.org/february\\_bba\\_meeting\\_21926](https://www.massclimateaction.org/february_bba_meeting_21926)

Sat., Feb 21 1-2:30 PM; Concord Scout House, 84 Walden St. Join OARS at the Concord Scout House for an afternoon pop-up exhibit of nature sounds recorded at Scout Island and Nashoba Brook. Enjoy the sounds of water, birds, and wildlife as you walk through the hall, accompanied by photographs and projections of the island. For more information and to RSVP, visit <https://oars3rivers.org/events/event/sounds-of-scout-island/>

Sat., Feb 28 1-4 PM; Fowler Library, Meeting Room. Seed Packing party. Join us at Fowler as we restock the Concord Seed Lending Library.

Weds., Mar 4 7-8:30 PM; Tree Webinar with Dr. William Moomaw. Nobel Prize recipient Dr. William Moomaw will talk on the irreplaceable value of mature trees and implications for the fight to stop the proposed private jet expansion at Hanscom where 20 acres of mature trees are threatened. To register, visit <https://zoom.us/meeting/register/G0BxGubgS3ePOWVils-jFA#/registration>

Thu., Mar 5 4:30-5:30 PM; 141 Keyes Rd., 1st floor meeting room. Ecology book group discussion on Finding the Mother Tree: Discovering the Wisdom of the Forest by Suzanne Simard and the first chapters of Towns, Ecology, and the Land by Concord's Richard T. T. Forman

Thu., Mar 5 6-7PM; Main Library, Goodwin Forum. OARS, Thoreau Alliance and the Concord Free Public Library co-host a book club discussion on Is A River Alive? by Robert

Macfarlane. Learn more about environmental legal personhood with Yenny Vega Cardenas, President of the International Observatory on the Rights of Nature, member of the IUCN Legal Committee and the United Nations "Harmony with Nature" expert network, and champion for the Rights of Nature. Advance registration is required. To register, visit: <https://concordlibrary.assabetinteractive.com/calendar/oars-book-discussion-of-is-a-river-alive-by-robert-macfarlane/>

Sat., Mar 7 9:30-11:30 AM; Daisy Hill Farm, 60 Wood Ln, unit 4529, Acton. Concord-Carlisle Adult Education class on seed starting. Instructor Kate Despres helps you grow your own healthy vegetable, flower, and herb plants from seed. We have a variety of tips and tricks as well to share after almost 20 years of seed starting. Learn about seed sourcing, grow area set-up, timing of starting seedlings, what soil to use, how often to water, and how to safely harden off seedlings for their move outside. Fee \$39. Registration is full; to join waitlist, visit: <https://ccace.asapconnected.com/#CourseID=264498>

Sat., Mar 14 6:30-8:30 PM; Concord Art. OARS co-hosts an art exhibit entitled Sounds of Science. More details TBA at <https://oars3rivers.org/events/event/river-sounds-event/>

Sun. Mar 15, 2-4 PM: LWVCC hosts a forum for municipal candidates for office. Location and details TBA.

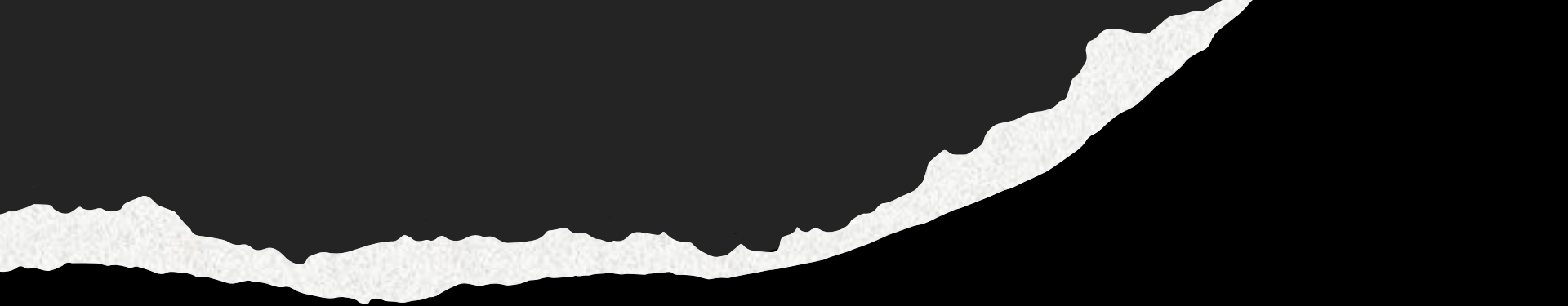
Sat., Mar 28 2:30-4:30 PM; Fowler Library, Meeting Room. Celebrate the spring equinox and learn about Nowruz, the Persian new year celebration. Join us to read poetry, a frequent Nowruz activity perfectly suited to Concord's literary heritage. All attendees will have an opportunity to share their own poetry celebrating spring and nature. To register, visit: <https://concordlibrary.assabetinteractive.com/calendar/nowruz-and-poetry-at-fowler-2/>

Tue., Mar 31 7 AM-8 PM - town election

Weds., Apr 1 - CMLP implementation of Time-of-Day electric rates begins.

Weds., Apr 8; Bentley University - MassEnergize Community Climate Leaders Annual Conference. To find more information on the program of events and to register, visit <https://www.massenergize.org/annual-conference/>

Mon., Apr. 27 6:30 PM, Concord-Carlisle Reg. High School - Annual Town Meeting begins



# Transitioning to Time-of-Day Electric Rates

A customer-focused update from  
your Municipal Light Plant

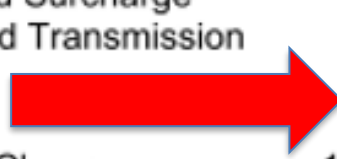
# Current Rate Structure

- Rate increases as total monthly use increases
- Same price regardless of time of day
- Does not reflect modern grid costs



**Description: ELE**

Readings		Meter Multiplier	kWh Usage
Previous	Present		
18339	19339	1.0	1,000
Discount Factor	1,000 kWh @ -0.004		-\$4.00
Service Charge			\$20.00
Credit PHEV			-\$5.00
Ground Surcharge			\$3.43
Energy And Transmission	657 kWh @ 0.05619		\$36.92
	178 kWh @ 0.06928		\$12.33
	165 kWh @ 0.09445		\$15.58
Distribution Charge	1,000 kWh @ 0.06561		\$65.61
Energy Charge	1,000 kWh @ 0.08393		\$83.93
PA Power Cost Adjustment	75 kWh @ -0.025		-\$1.88
	925 kWh @ 0.00		\$0.00
<b>Electric Service Subtotal</b>			<b>\$226.92</b>



# Why Rates Are Changing

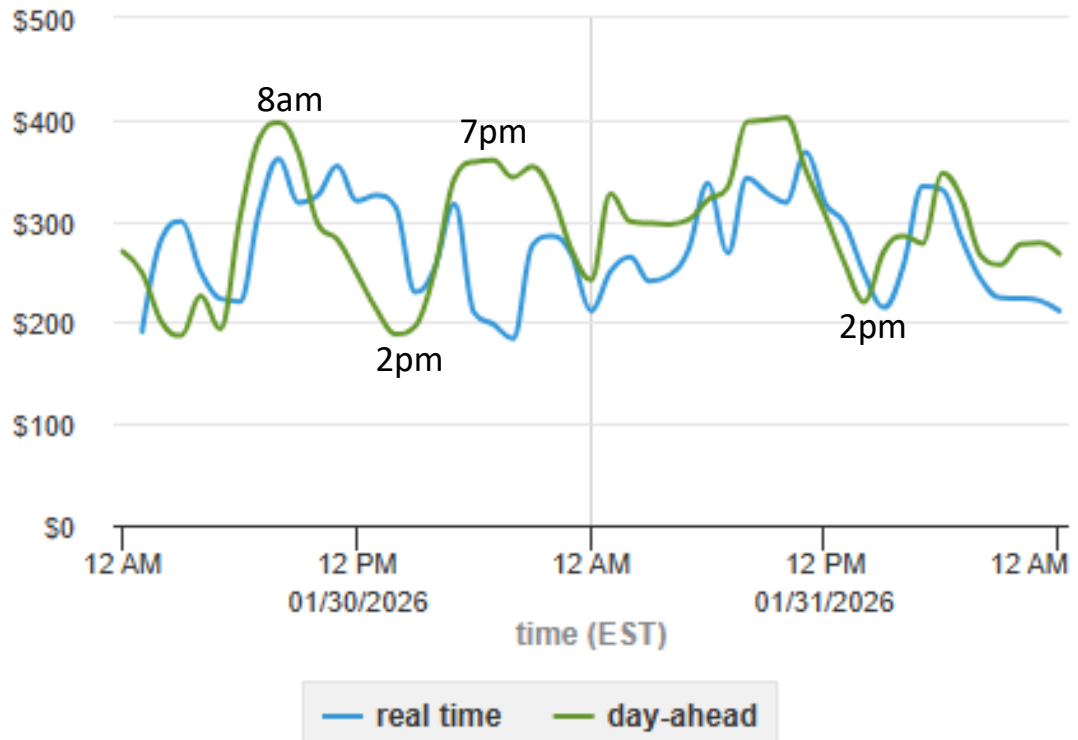
- Electricity costs vary by time of day
- Peak demand drives system costs
- Solar, EVs, and heat pumps change usage patterns



## Hourly locational marginal prices at the ISO New England Hub

(Click and drag in the plot area to zoom in)

dollars per megawatthour (\$/MWh)



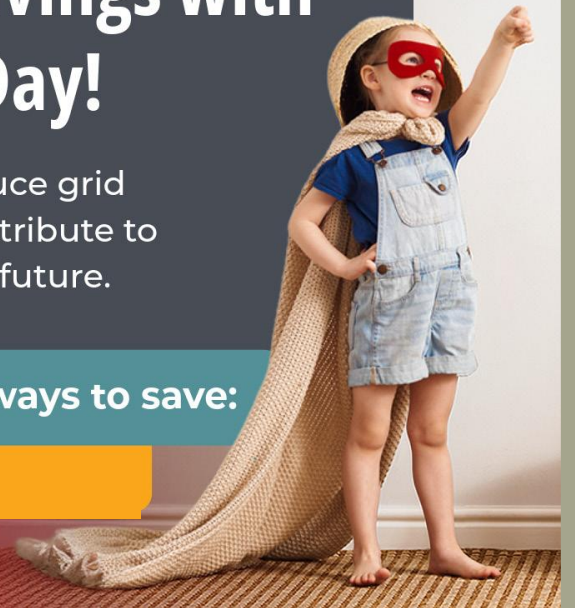
# Time of Day

4/1/2026

## Take Control of Your Energy Savings with Time-of-Day!

Save money, reduce grid  
demand and contribute to  
a cleaner energy future.

Discover easy ways to save:





Prices vary by  
time of day

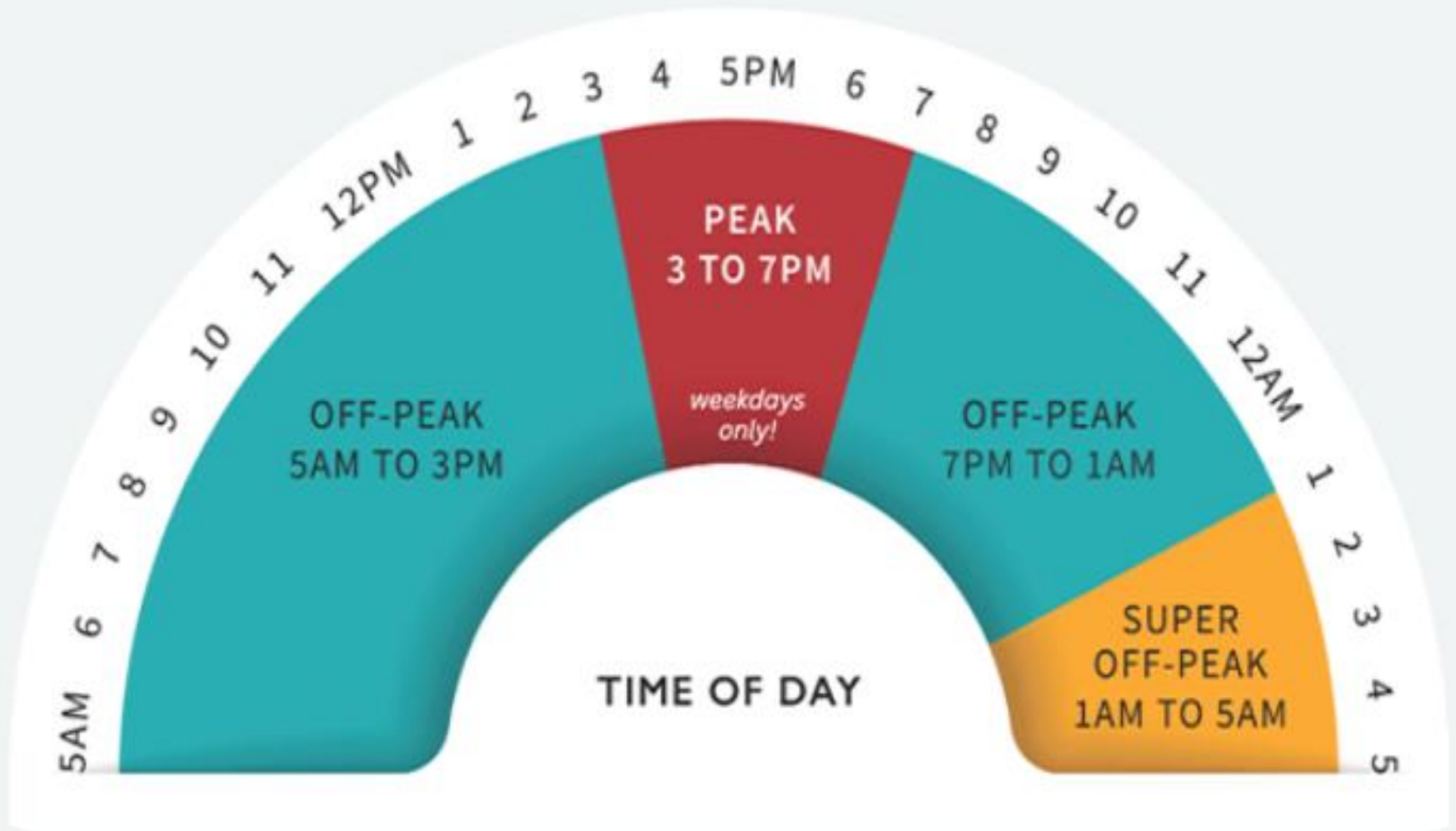


Higher-cost during  
peak demand hours



Lower-cost  
periods  
overnight

# New Structure: Time-of-Day Rates



**Peak Hours:** Weekdays 3–7 PM → higher rate

**Super Off-Peak Hours:** Every day 1–5 AM → lowest rate

**Off-Peak Hours:** All other hours → lower rate

# Residential Rate Transition April 2026

R-1



TOD

- \$0.20573/kWh first 657 kWh/month
- \$0.21882/kWh next 178 kWh/month
- \$0.24399/kWh usage > 835 kWh/month

## Standard Months: Jan, Feb, May–Sep, Dec

- Super Off-Peak (1–5 a.m.): \$0.20117/kWh
- Off-Peak: \$0.20432/kWh
- On-Peak (3–7 p.m. weekdays): \$0.30315/kWh

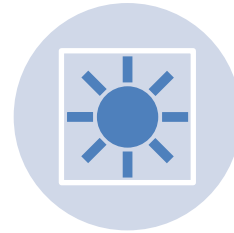
## Shoulder Months: Mar, Apr, Oct, Nov

- Super Off-Peak (1–5 a.m.): \$0.19644/kWh
- Off-Peak: \$0.20230/kWh
- On-Peak (3–7 p.m. weekdays): \$0.25379/kWh

# What This Means for Customers



Opportunities to save by shifting flexible usage



Support programs for EVs, heat pumps, and solar



Contributing to a lower carbon future



Fairer allocation of costs

# Communication & Education Initiatives



Bill inserts (“TOD is Coming”)



Website updates and new web pages



Social Media and Town News & Notices



In-person customer sessions and coffee Q&A



Direct mail, brochures, swag, and postcards



FAQs

# New TOD Landing Page

<https://concordma.gov/464/Municipal-Light-Plant>

The screenshot shows the Town of Concord website. The header includes the town seal, the name 'THE TOWN OF CONCORD MASSACHUSETTS', and navigation links for GOVERNMENT, SERVICES, RESIDENTS, VISITORS, and HOW DO I... There is also a search bar and social media icons for Facebook, Twitter, and Instagram. A vertical sidebar on the left contains various utility-related links: HOME, CONTACT US, NOTIFY ME, MINUTES & AGENDAS, REPORT AN ISSUE, BIDS & PROPOSALS, and MINUTEMAN MEDIA NETWORK. The main content area features a banner image of a wooden bridge over a pond. Below the banner, the breadcrumb trail reads 'Home > Government > Departments > Municipal Light Plant'. The main heading is 'Municipal Light Plant'. A prominent red banner advertises 'The 'Does It Work?' Mid-Winter Home Tour' on Saturday, January 31 from 1 – 3:30PM, with a snow date of Saturday, February 7 from 1 – 3:30PM. A 'Learn More & Register' button is visible. To the right, there is a 'Contact Us' section for the Municipal Light Plant, including an email link, physical address (1175 Elm Street, Concord, MA 01742), mailing address (P.O. Box 1029, Concord, MA 01742), and phone number (978-318-3101). In the left sidebar, the 'Time-of-Day Electric Rates' link is highlighted with a green box and a green arrow points to it.

# CMLP's TOD Webpage

Create a Website Account - Manage notification subscriptions, save form progress and more.

Website Sign In



THE TOWN OF  
**CONCORD**  
MASSACHUSETTS



Search...



GOVERNMENT

SERVICES

RESIDENTS

VISITORS

HOW DO I...



HOME



CONTACT US



NOTIFY ME®



MINUTES &  
AGENDAS



REPORT AN  
ISSUE



BIDS &  
PROPOSALS



MINUTEMAN

- Time of Day FAQs
- Tips for Saving
- Time of Day Rate Calculator
- Time of Day Rates
- Time of Day Resources

Home › Government › Departments › Municipal Light Plant › Time-of-Day Electric Rates

## Time-of-Day Electric Rates



# Customer Outreach and Education

Enhanced landing pages with easy-to-understand videos and information to guide customers through upcoming rate changes.




## Introducing Time-of-Day Electric Rates

Together, We're Powering a Smarter Energy Future

**Your energy. Your choices. Your impact.**

**You Spoke, We Listened**  
 Your voice has helped to shape Concord's energy future. We've listened closely to feedback from our customers — and the message remains clear: Concord is ready for a more equitable, cleaner energy system.

**Effective April 1, 2024,** Concord Municipal Light Plant (CMLP) is proud to announce a new residential Time-of-Day (TOD) electric rate. This change reflects our shared commitment to a sustainable energy future.

**How Does TOD Work?**  
 With this new rate, the price you pay for electricity is based on when you use it. Simply put, TOD reflects the true cost of energy for a given time period.

**Weekdays**  
 By shifting some of your energy use to off-peak hours on weekdays, before 10 AM and after 7 PM, you can save money and help reduce strain on the grid. That's 10-20 hours every weekday to save!

**Weekends**  
 With TOD, energy off-peak savings is extended long. Every Saturday and Sunday are designated as off-peak hours, to make the most of your weekends, offer a perfect opportunity to make the most of lower off-peak prices without adjusting your machine.

**TOD gives you the power to choose how and when you use energy.**



**Shoulder = Weekdays and Chosen Weekends\***  
**Standard = All Other Hours**

**Peak Hours:** Weekdays, 3 to 7 PM = higher rate  
**Off-Peak Hours:** Every day, 10 to 5 AM = lowest rate  
**Off-Peak Hours:** All other times, including weekends = lower rate  
 \*Lower rates apply during Shoulder months

[Download the PDF with specific details of your rate breakdown.](#)

## How to Save on TOD



**Saving money is easier than you think on the new TOD rate.** It starts with understanding which appliances use the most electricity and when to shift energy use to off-peak times. Simple swaps — like running the dishwasher later in the evening or charging your EV overnight — can make a difference. You can even use smart technology to help automate your savings. Over time, these small tweaks to your schedule add up to greater savings and sustainability.

**Shift use of these appliances/devices to optimize savings:**

- Chloras Drier:** This is one of the biggest energy users in the home. Try running loads in the early morning, late evening or on weekends when rates are lower.
- Dishwasher:** Run your dishwasher after 7 PM or set it to start overnight. Many models include a delay-start function for easy scheduling.
- EV charger:** Charge overnight to maximize use during the lower off-peak hours (1 to 5 AM) and significantly cut costs while reducing grid demand.
- Washing machines:** Similar to dryers, washers use more power during peak hours. Shift laundry loads to off-peak times for maximum efficiency.
- Smart plugs:** If you have a peak schedule your plugs to operate during off-peak hours. Smart timers make this simple and automatic.

**Quick TOD Tips**

- Run major appliances:** Run your dryer or dishwasher after 7 PM or on weekends.
- Charge your EV overnight:** Charge your EV overnight during Super Off-Peak hours.
- Use smart plugs:** Use smart plugs or timers to automatically shift your usage.
- Pre-heat or pre-heat your home:** Pre-heat your home before 5 PM to avoid peak hours.
- Unplug devices when not in use:** Unplug devices when not in use — even standby power adds up.
- Run your pool pump in the early morning or evening:** Run your pool pump in the early morning or evening to cut energy costs.



**The Power of Progress**

Every household that participates in TOD contributes to a cleaner, more resilient and equitable energy system in Concord. Together, our individual actions can create positive change.



# Customer Outreach and Education

Leading up to April 1, customers will find important updates included in their monthly bills and information within the SmartHub.

**Your Energy. Your Choices. Your Impact.**

*Time-of-Day (TOD) is a big step forward to a cleaner, more equitable energy system in Concord.*

**How TOD Works**

TOD empowers you to take control of your energy use. With this new rate, the price you pay for electricity is based on when you use it. **By shifting some of your energy use to off-peak hours, you can save money and help reduce strain on the electric grid.**

**Peak Hours:**  
Weekdays, 3-7 PM = higher rate

**Super Off-Peak Hours:**  
Every day, 1-5 AM = lowest rate

**Off-Peak Hours:**  
All other times, including weekends = lower rate

\*Lower rates apply during shoulder months

**Together, our community can:**

- Save money through smarter energy habits
- Reduce emissions and reliance on fossil fuels
- Create a fairer electric rate system for everyone

Explore TOD details and savings tips:  
Scan the QR code or visit [www.webstelink.com](http://www.webstelink.com)

**CONCORD MUNICIPAL LIGHT PLANT**  
SUSTAINABLE • INNOVATIVE • SMART MANAGEMENT

**CONCORD MUNICIPAL LIGHT PLANT**  
SUSTAINABLE • INNOVATIVE • SMART MANAGEMENT

**Coming Soon: Time-of-Day Rate**  
*Together, we're powering a smarter energy future.*

Starting April 1, 2026, Concord Municipal Light Plant (CMLP) will launch a new **Time-of-Day (TOD) rate** to all residential customers. TOD is more than an electric rate – it's a community-wide effort to make energy use smarter, cleaner and more equitable.

Ready to learn more about TOD?  
Scan the QR code or visit [www.webstelink.com](http://www.webstelink.com)

Winter Peak Period: 7-9 AM M-F  
 Winter Mid-Peak Periods: 5 AM-7 AM, 9 AM-10 PM M-F

# Customer Outreach and Education

Select your average kWh/month:

Check the boxes below to see how using certain high-wattage appliances during the peak and mid-peak time-of-use periods above will affect your monthly bill. You can also adjust the "baseline" kW usage based on your home's baseline average load during peak and mid-peak periods.

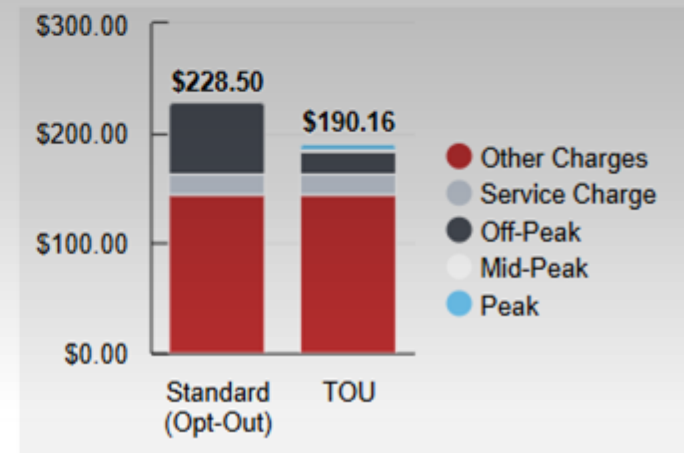
Customers will have access to a calculator to easily estimate their monthly charges

APPLIANCE	LOAD (kW)	PEAK	MID-PEAK
Air Conditioning	2.00	<input type="checkbox"/>	<input type="checkbox"/>
Dishwasher	2.40	<input type="checkbox"/>	<input type="checkbox"/>
Dryer	2.75	<input type="checkbox"/>	<input type="checkbox"/>
Electric Oven	1.75	<input type="checkbox"/>	<input type="checkbox"/>
Electric Range	1.00	<input type="checkbox"/>	<input type="checkbox"/>
Electric Water Heater	4.50	<input type="checkbox"/>	<input type="checkbox"/>
EV Charger (Level 2)	7.20	<input type="checkbox"/>	<input type="checkbox"/>
Hair Dryer	0.38	<input type="checkbox"/>	<input type="checkbox"/>
Heat Pump	2.00	<input type="checkbox"/>	<input type="checkbox"/>
Microwave	0.38	<input type="checkbox"/>	<input type="checkbox"/>
Pool Pump (1.5HP)	0.60	<input type="checkbox"/>	<input type="checkbox"/>
Space Heater	0.75	<input type="checkbox"/>	<input type="checkbox"/>
Strip Heater	5.50	<input type="checkbox"/>	<input type="checkbox"/>
Washing Machine	0.60	<input type="checkbox"/>	<input type="checkbox"/>
Window AC Unit	0.50	<input type="checkbox"/>	<input type="checkbox"/>
Baseline (specify kW→)		<b>1.50</b>	<b>1.50</b>
	Daily kWh	1.50	1.50
	Monthly kWh	32.62	32.62

Note: This calculator is for illustrative purposes only. Monthly kWh total is based on 1 hour of usage per day per appliance, multiplied by an average of 21.75 weekdays per month.

Your Estimated TOU Savings	
<b>Standard (Opt-out) residential plan:</b>	
service charge	\$20.00
usage charge	\$64.83
other charges	\$143.67
<b>total monthly cost</b>	<b>\$228.50</b>
<b>Time of Use plan:</b>	
service charge	\$20.00
off-peak usage charge	\$19.65
mid-peak usage charge	\$1.96
peak usage charge	\$4.89
other charges	\$143.67
<b>total monthly cost</b>	<b>\$190.16</b>
<b>Time of Use savings:</b>	<b>\$38.33</b>

How your savings stack up:





# How the Transition Will Work



Education and bill comparisons first



Default Time-of-Day rate with opt-out option



Limited rate changes to once per 12 months



**QUESTIONS?**

**To:** Climate Action Committee

**CC:** Megan Zammuto, Deputy Town Manager, Climate Action Committee Liaisons

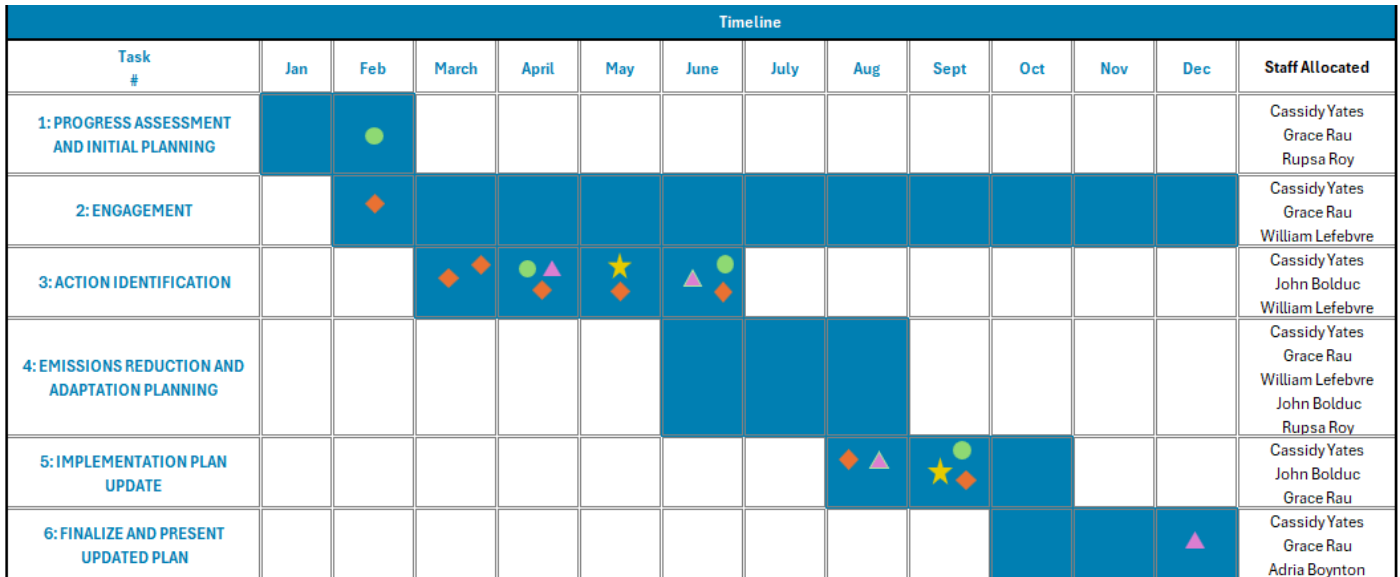
**From:** Shannon McAndrew, Management Specialist

**Date:** February 11, 2026

**Subject:** Climate Action and Resilience Plan Update with Weston and Sampson – Project Update

**Project Timeline – Standing Review Item**

The timeline graphic illustrates the anticipated 12-month project schedule, organized by task and showing when key engagement activities are expected to occur.



- Meetings**
- ★ Community Engagement
  - ◆ Stakeholder Interviews
  - Climate Action Committee Meeting
  - ▲ Town Departments / Select Board
  - ▲ Engagement by email

Committee Meeting Dates:	Milestones:
<b>Feb 11th</b>	
March 18th	
<b>April 15th</b>	Initial Action List by Sector
May 20th	
<b>June 10th</b>	Final Action List by Sector
July	
August	
<b>September</b>	Provide info for Implementation Plan
October	
November	
December	

- Blue bars indicate active work periods for each major task.
- Icons identify points of engagement, including:
  - Climate Action Committee meetings
  - Community engagement workshops
  - Stakeholder interviews
  - Meetings with Town departments and the Select Board

---

## **Task 1 Review: Progress Assessment and Initial Planning**

### **1.1: Review 2020 Climate Action and Resilience Plan and Other Related Documents/Plans**

**Status:** In-progress, near complete

- SharePoint Folder with the 2020 CARP and other related documents/plans was shared with Weston and Sampson for their team to review.

### **1.2: Develop a Community and Stakeholder Engagement Plan**

**Status:** In-progress

#### **Kick-Off with the Climate Action Committee**

- The proposal includes two in-person and two virtual meetings with the Climate Action Committee over the course of the project.
- **For discussion with Weston and Sampson:**
  - Defining roles and expectations
  - Any further debrief from the synthesized results of the Climate Action Committee brainstorming session in January 2026

#### **Broader Community Engagement**

- Weston and Sampson is preparing a draft Community Engagement plan for approval prior to beginning broader engagement.
  - Stakeholder mapping
    - Other Town departments, boards, committees involvement
- As reflected in the timeline, the proposal includes two in-person and two virtual community workshops:
  - First workshop: Tentatively scheduled for May 2026
  - Second workshop: Was tentatively scheduled for July 2026, but we flagged that community engagement in the summertime in Concord is challenging. Closer to, we will consider if it makes more sense to bump this up to June or to push until September.
- Thinking about Committee members' greater participation in broader engagement:
  - Intermedium engagement with the community directly
  - Participation at workshops, such as running small group activities/tabling
- Stakeholder interviews will be held throughout the main duration of the project.

---

#### **Action Items for Climate Action Committee**

- Review/refresh on the [2020 Climate Action and Resilience Plan](#)
- Continue sending “parking lot ideas” to Shannon

## Climate Action Committee (CAC) Meeting Minutes - 1/21/26

---

Pursuant to a notice duly filed with the Town Clerk, a public meeting of the CAC was held on January 21st 2026 at 7:00 pm in person at the Select Board Meeting Room and via Zoom (hybrid). A recording of this meeting is available on [YouTube](#).

Committee members attending: Brad Dye (BradD, chair), Bob Shatten, Brad Hubbard-Nelson (BradHN, clerk), Shelly Karlin, Paul Kirshen, Fran Cummings (via zoom), Kathryn Hopkins  
Other attendees: Dean Banfield, Wendy Rovelli (Select Board liaison), Megan Zammuto (via zoom), Sophia Annunziata (via zoom), Jerry Frenkil (via zoom), Charlie Parker

High level summary (AI): The Climate Action Committee meeting focused on reviewing a warrant article for municipal solar policy, which the committee unanimously endorsed. The group discussed the town's progress toward its solar goals and the challenges with the current distribution system. They also reviewed plans for updating the Climate Action Plan, including community engagement strategies and the need to track progress toward sustainability goals. The committee addressed the importance of involving relevant stakeholders, such as CMLP and other town departments, in the planning process. Updates were provided on various initiatives, including GSEP filing, school projects, and the upcoming consultant-led Climate Action Plan update.

- All committee members: Send one-paragraph bio with photo to Shannon by close of business Friday
- Shannon: Add GSEP follow-up meeting with National Grid to parking lot list for climate action plan
- BradD: Contact Laura Scott about attending future climate action meetings
- BradD: Send solar task force report to committee members
- BradHN: Request complete data dump of assessor's database for building information
- Fran: Conduct emission inventory analysis for 2024 using MAPC tool
- BradHN/Shelly: Meet with student group in next 1-2 weeks to help develop induction cooking promotion campaign

Meeting opened at 7:05 pm.

1. Welcome – comments and announcements
  - a. *BradD mentioned an application for a gas station at Kenny Dunn Square, West Concord. CAC could discuss at a future meeting*
  - b. *BradD highlighted two Jan 28th events: a Metro West Climate Solutions webinar and a Bedford chapter meeting on composting, and encouraged attendance.*
2. *Approval of minutes: Bob moved to approve Dec 1th CAC minutes , Paul second, approval unanimous. BradHN moved to approve Jan 5 minutes, with minor correction on attendee list, Bob second, unanimous approval.*
3. *Chair update:*
  - a. *The CAC Annual report submitted (Attachment 1).*
  - b. *Town Meeting Warrant is closing on Friday, with 47 articles so far, and the committee will review these in February and March as needed.*
4. *Deputy Town Manager's update: Megan Zammuto (written report - Attachment 2)*
  - a. *Megan has been doing a lot of public outreach, including a Civic Concord [podcast episode](#) with Ethan Herberman, (75 listeners).*
    - i. *BradHN suggested the [CoolerConcord.org](#) website and newsletter could promote these podcasts, most of which are sustainability related.*
  - b. *Megan discussed progress on the SUASCO Climate Collaborative, including four community focus groups and plans for a youth outreach effort, assisted by Sophia.*

- i. BradD asked about the March meeting at Harvey Wheeler, 7pm Mar 28th. This will be advertised 6 weeks in advance
    - ii. Paul said the group plans to reach out to EJ communities in the watershed and will translate materials into other languages to reach them.
  - c. A draft decarbonization roadmap from Power Options is being reviewed, and there are efforts to end the town's natural gas supply contract to join Power Options' building decarbonization service as an Energy Services Company (ESCO)
    - i. Fran volunteered to review the roadmap. He also asked whether there might be a way to invite nonprofits to join with Power Options to take advantage of the service..
    - ii. Bob asked about whether the ESCO covered electricity purchases. It only involves natural gas and not electricity, as CMLP provides power to municipal buildings.
  - d. Shelly mentioned there would be a Schools Sustainability Meeting next Wednesday. Megan or Shannon will get on the distribution list and attend
- 5. Presentation on proposed municipal solar policy: Charles Parker, Dean Banfield.
  - a. Dean gave a presentation (**Attachment 3**) about a proposed bylaw on municipal solar policy for April Town Meeting. He shared the town's solar goals and progress since 2010, highlighting the Solar Task Force's recommendation to integrate solar design into new building projects to avoid overlapping responsibilities and ensure economic viability. He discussed the challenges of integrating solar arrays into new public buildings, highlighting the need for an integrated design approach to avoid timeline conflicts and overlapping maintenance responsibilities. The proposed bylaw would require implementing rooftop solar on all new public buildings, which would reduce operating costs and align with the town's goals. The discussion also covered the financial implications of embedding debt for solar projects, with a payback period of 6-8 years, and the introduction of a bylaw requiring solar installations on new buildings, with an option for the select board to waive it in certain cases.
  - b. They identified four potential sites for ground solar, but bureaucratic challenges prevent development on three of them. The town is currently at 7.5 megawatts of solar capacity, with plans to add 2.5 megawatts at the landfill this year.
  - c. The discussion also covered commercial solar development, noting that while it's not part of the current article, CMLP has been resistant to large-scale installations due to grid stress concerns, though they are working on interconnect agreements to address this issue. It is important to complete the battery project to enable further commercial solar projects and future opportunities at 2229 and the MCI property for integrating solar into development plans. The group discussed the need for better marketing and outreach to commercial entities, as well as the importance of creating a bylaw to formalize solar initiatives, with Town advocating for a bylaw to ensure long-term implementation.
  - d. Paul asked about the importance of being "Behind the Meter": This is so that the savings for the building would be the full retail price, rather than the wholesale price which CMLP pays for systems not behind-the-meter.
  - e. Fran asked whether CMLP supported the article, which was answered affirmatively.
  - f. The proposed article doesn't address building design for solar orientation and architectural integration. Megain clarified that most municipal buildings use flat roofs, which provide optimal solar orientation, and confirmed that the policy should aim to blend sustainability with functionality rather than treating it as an afterthought.
  - g. BradHN made a motion to endorse the article, Kathryn seconded, and the committee voted unanimously in support.
- 6. [Climate Action and Resilience Plan](#)
  - a. Debrief of brainstorming session on Jan 6. BradD to send the digital version of everything captured.
  - b. BradD to consider how to include outside people in a systematic way. One finance person (Ryan Ferrara, assistant CFO) was at the session. Kathryn commented that we should definitely have a finance person involved as a stakeholder
  - c. Fran commented that CMLP is more than just another stakeholder, but tht role should be formalized and elevated.

- d. *First steps for engaging vendor: Shannon and Megan met with Weston & Sampson. Shannon shared timeline graphic (attachment 4). W&S will attend Feb 11th meeting, and every other month*
  - e. *Committee members were asked to provide to Shannon a one-paragraph background on interests and sustainability, by Friday.*
  - f. *Anticipating a draft Community Engagement plan to review in February. BradD suggested making using elements of the engagement plans from CMLP and wastewater treatment. They gave examples about how committee members could have greater roles in community engagement*
  - g. *BradD said we need a system in place to collect ideas, before deliberating and dispensing. Kathryn described a school project which is a similar exercise, a parking lot for ideas.*
  - h. *Homework assignment for committee members, is to think of parking lot items and send to Shannon and BradD*
  - i. *Fran suggested we need to soon do the emissions progress for 2024 using the MAPC tool. BradHN will request a complete copy of assessors database for 2025.*
7. *Other updates*
- a. *GSEP/non-pipeline alternatives: Fran filed the GSEP comments which were discussed at the December meeting. Fran asked about a follow up meeting with National Grid. Niot yet scheduled, though should e added to*
  - b. *Networked Geothermal - no update*
  - c. *Schools*
    - i. *Solar panels on the agenda for the school committee agenda for this evening. Schools are intending to move forward with a new RFP*
    - ii. *Shelly reported that Bruce Feeman connection approved by school committee*
    - iii. *BradHN reported that sthodont group working on the Youth Climate Solutions Challenge is working on promoting induction cooking. This project wraps up in April. Bob suggested focusing on induction in developing world, since impacts are much greater, but this needs to be a local project*
8. *Public comments - None*
9. *Adjourned at 9:06ppm*

*Attachments:*

- 1. *CAC 2025 Annual Report, as submitted*
- 2. *Staff monthly report - January 2026*
- 3. *Presentation on Municipal Solar Bylaw (Dean Banfield)*
- 4. *Timeline on Climate Action Plan update, from Weston & Sampson*